

Regency Square

Brighton, BN1





We know just the place...



A substantial and spacious three bedroom, two bathroom apartment, benefiting from a double reception room. This is centrally located and the seafront is at the end of the square, giving you the real Brighton lifestyle. This property does not have an HMO license.

As you enter from the private street entrance, you walk into the living room, which measures 19'2 x 17'1. This area beautifully opens via double doors into the dining room, which again has double doors to the separate kitchen and additional doors to the rear courtyard area. All three bedrooms are of a very good size, with two bathrooms located between them. The second bedroom has double doors leading to the second courtyard area.

Regency Square has a beautiful communal garden, which has direct views of the sea and the i360. Many bus services run on the seafront road, but you are also within walking distance to Brighton Station for committing to London. Many restaurants bars and cafes are on the surrounding roads, this is really an apartment you don't want to miss!

Available now.



3



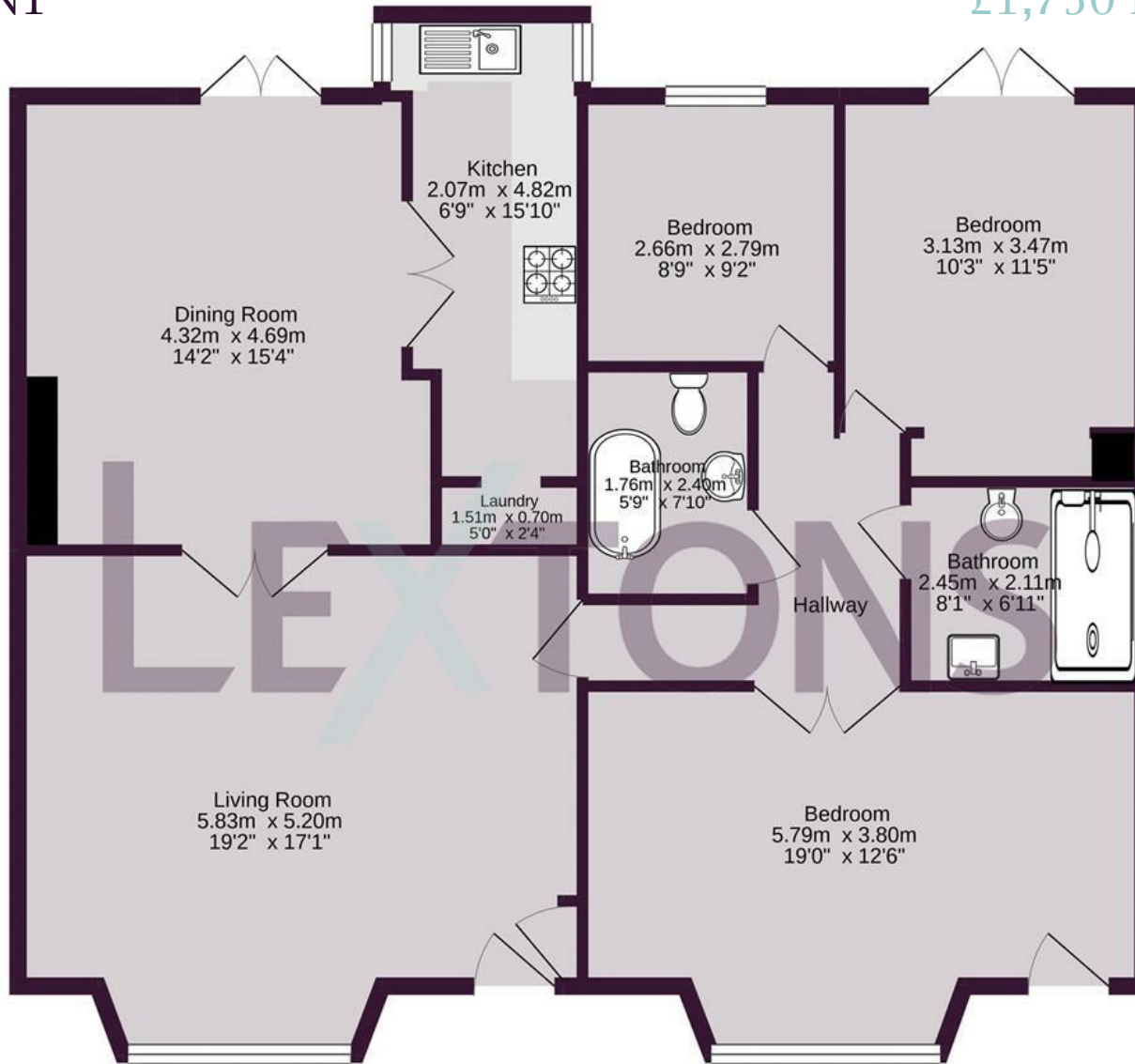
2



2



D



Approximate gross internal floor area 111.4 sq m/ 1199 sq ft

Whilst every care has been taken to ensure accuracy, dimensions are approximate and for illustrative purposes only.

Copyright Lextons 2020. All rights reserved.

Meet us here...
174 Church Road
Hove
BN3 2DJ

We aim to make our particulars both accurate and reliable. However they are not guaranteed; nor do they form part of an offer or contract. If you require clarification on any points then please contact us, especially if you're traveling some distance to view. Please note that appliances and heating systems have not been tested and therefore no warranties can be given as to their good working order.

